

A79 belts for woodworking machines

...very efficient at high processing pressures...

With experience and application know-how, Ammeraal Beltech has developed a new series of belts for woodworking machinery, sanders, planers, and calendars.

The Ammeraal Beltech wood sanding range is manufactured with polyester tension member covered with our famous Flexam and Elastoflex coatings in different hardnesses depending on the type of material to be processed and on the type of machinery.

The A79 Diamond profile is used in particular working conditions and is suitable for vacuum applications.

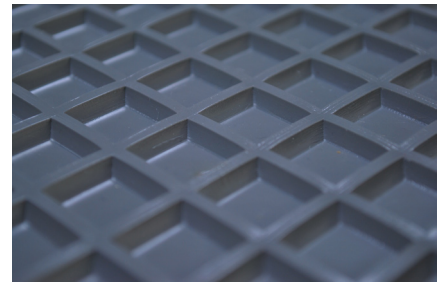
For selecting the right conveyor belt for your own machine requirements, please contact our technical engineers who are at your disposal to offer you their advice.

Main features

- Absolute uniform thickness also in the splice area
- Maximum flatness in width
- Highly efficient grip for long lasting periods
- Excellent wear and abrasion resistant Elastoflex
- Oil and water resistant
- Other top profiles, hardnesses, and colors available
- Belt available in unique Ziplink execution for quick installation
- Possible with antistatic properties and ATEX certification

Customer benefits

- Good belt performance
- No belt elongation and no deformation of surface
- Long belt life
- Quick installation and short delivery time



Flexam with A79 profile

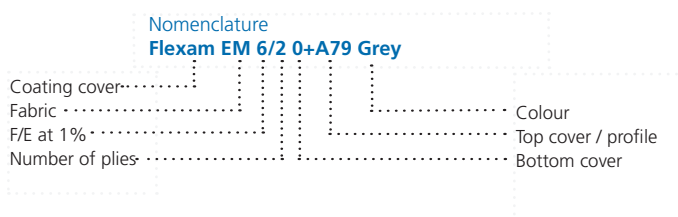


Wear resistant Elastoflex with A79 profile

Article No.	Nomenclature	Number of plies	Thickness [mm]	Hardness [shore A]	Max. admissible working load [N/mm]	Min. flexing diameter [mm]	Standard width [mm]
574762	Flexam EM 6/2 0 + A79 Grey	2	6,6	55	16	80	1350
574752	Flexam EM 15/3 0 + A79 Grey	3	7,8	55	24	120	1350
583030	Flexam EZP 10/1 0 + A79 Grey	1	7,5	55	28	100	1400
514831	Elastoflex EM 15/3 0 + A79 Beige	3	8,8	65	24	100	1500

Bottom cover or top cover:

- 0 = bare fabric
- A79 = Diamond profile



Ammeraal Beltech Holding B.V.
Handelsstraat 1, P.O. Box 38
1700 AA Heerhugowaard
The Netherlands

T +31 (0)72 - 57 51 212
F +31 (0)72 - 57 16455
info@ammeraalbeltech.com
www.ammeraalbeltech.com

This information is subject to alteration due to continuous development. Ammeraal Beltech will not be held liable for the incorrect use of the above stated information. This information replaces previous information. All activities performed and services rendered by Ammeraal Beltech are subject to general terms and conditions of sale and delivery, as applied by its operating companies.